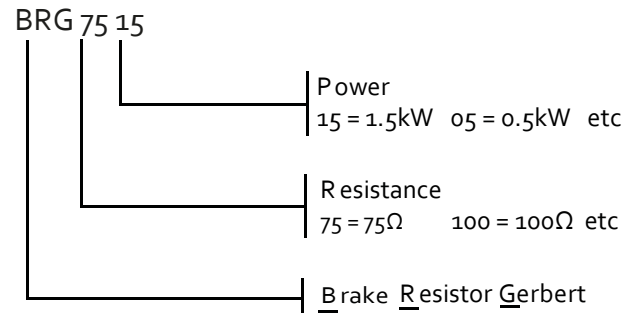
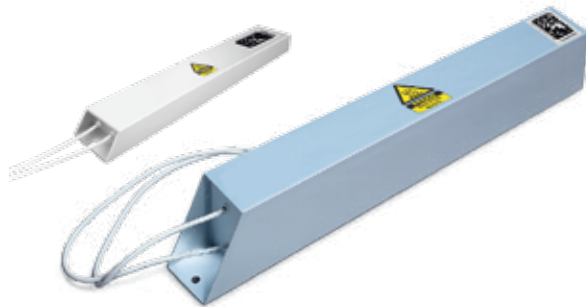




Datasheet Brake Resistors

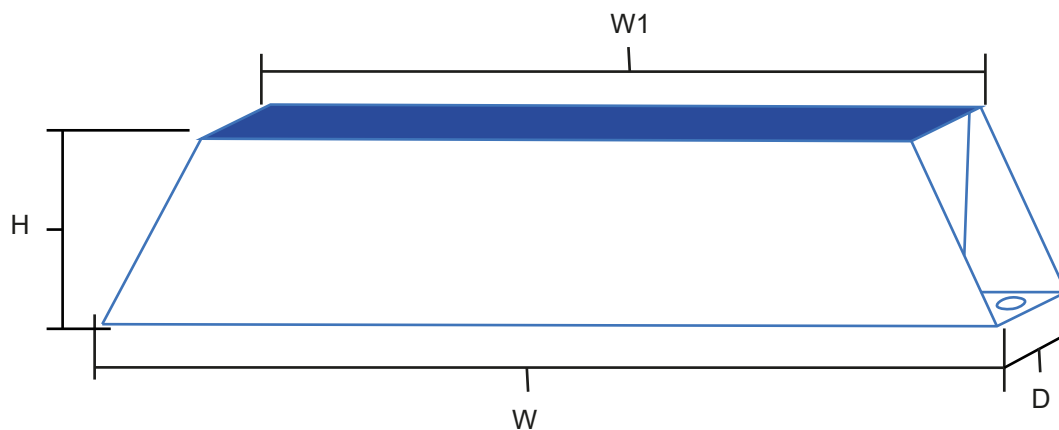
All in aluminum casing.

Type number key:



Overview: Power, Resistance, Dimensions (All in aluminum casing)

Resistor type	Resistance (Ω@25°C)	Power (kW)	W (mm+3%)	W1 (mm+3%)	H (mm+3%)	D (mm+3%)	Tmax (°C)	Cable length (mm+5%)	Hole Size (Ø mm)	Rough weight (kg)
BRG20005	200	0.5	390	340	26	50	180	500	6.2	1.8
BRG10010	100	1.0	520	470	26	50	180	500	6.2	2.0
BRG7508	75	0.8	440	390	26	50	180	500	6.2	2.0
BRG7515	75	1.5	490	440	110	50	180	500	6.8	3.0
BRG5025	50	2.5	440	390	110	50	180	500	6.8	5.0
BRG4030	40	3.0	520	470	110	50	180	500	6.8	5.0
BRG3035	30	3.5	560	510	110	50	180	500	6.8	5.0



Brake resistor type vs. Drive type (Voltage&Power)

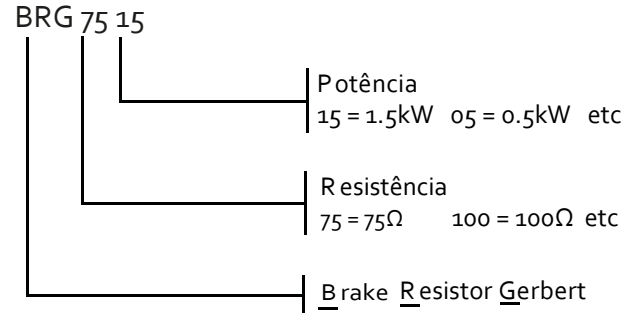
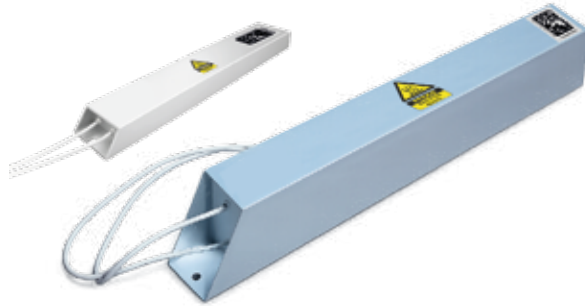
For use in the different drives, either with built-in brake chopper or additional option brake unit, please refer to the related user manuals.



Ficha Técnica – Resistores de Frenagem

Construção: Carcaça totalmente em alumínio.

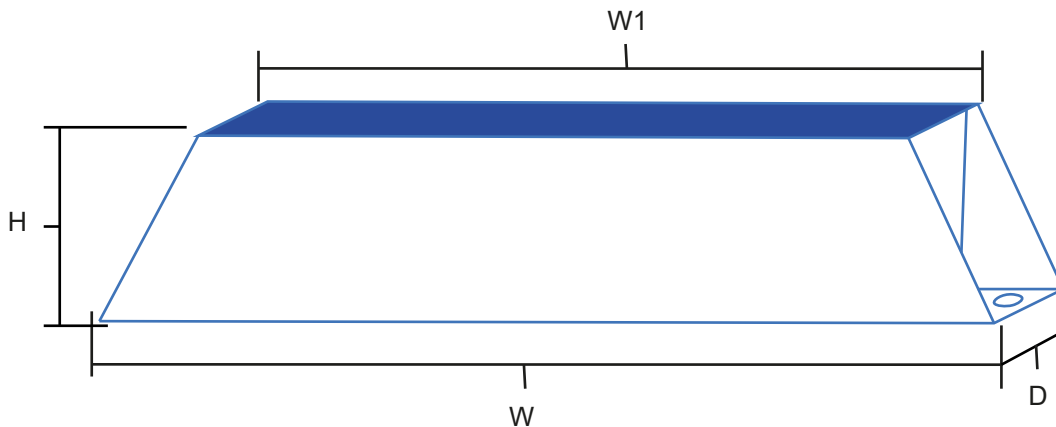
Chave de identificação do número do tipo:



Visão geral: Potência, Resistência e Dimensões

Construção: Carcaça totalmente em alumínio.

Tipo de Resistor	Resistência (Ω@25°C)	Potência (kW)	W (mm+3%)	W1 (mm+3%)	H (mm+3%)	D (mm+3%)	Tmax (°C)	Comp. Cabo (mm+5%)	Tam.Furo (Ø mm)	Peso aprox. (kg)
BRG20005	200	0.5	390	340	26	50	180	500	6.2	1.8
BRG10010	100	1.0	520	470	26	50	180	500	6.2	2.0
BRG7508	75	0.8	440	390	26	50	180	500	6.2	2.0
BRG7515	75	1.5	490	440	110	50	180	500	6.8	3.0
BRG5025	50	2.5	440	390	110	50	180	500	6.8	5.0
BRG4030	40	3.0	520	470	110	50	180	500	6.8	5.0
BRG3035	30	3.5	560	510	110	50	180	500	6.8	5.0



Resistor de frenagem vs. tipo de acionamento (Tensão e Potência)

Para uso em diferentes inversores/acionamentos, seja com chopper de frenagem integrado ou módulo de frenagem adicional, consulte os manuais para usuário do inversor ou módulo.